

May 19, 1997

Introduced By:

BRIAN DERDOWSKI
ROB MCKENNA
LARRY PHILLIPS

Proposed No.:

97-432

ORDINANCE NO. **12872**

AN ORDINANCE authorizing expansion of the
King County Waterways 2000 Patterson Creek
Basin Project to include the acquisition of the
27-acre Richards property.

PREAMBLE:

1. King County has proposed the expansion of the Waterways 2000 Patterson Creek Basin project consisting of creekside salmon habitat to include acquisition of the 27-acre Richards property to protect additional habitat along Patterson Creek.
2. The King County Open Space Citizens Oversight Committee has reviewed this proposal and recommends the expansion of the Waterways 2000 Patterson Creek Basin project to include acquisition of the 27-acre Richards property.

12872

1 BE IT ORDAINED BY THE COUNCIL OF KING COUNTY:

2 SECTION 1. There is hereby approved and adopted the expansion of the King County

3 Waterways 2000 Patterson Creek Basin Project to include the acquisition of the 27-acre

4 Richards property.

5 INTRODUCED AND READ for this first time this 21st day of July, 1997.

6 PASSED by a vote of 13 to 0 this 15th day of September, 1997

7 KING COUNTY COUNCIL
8 KING COUNTY, WASHINGTON

9
10
11
12
13
14 Chair *Jane Hague*

14 ATTEST:

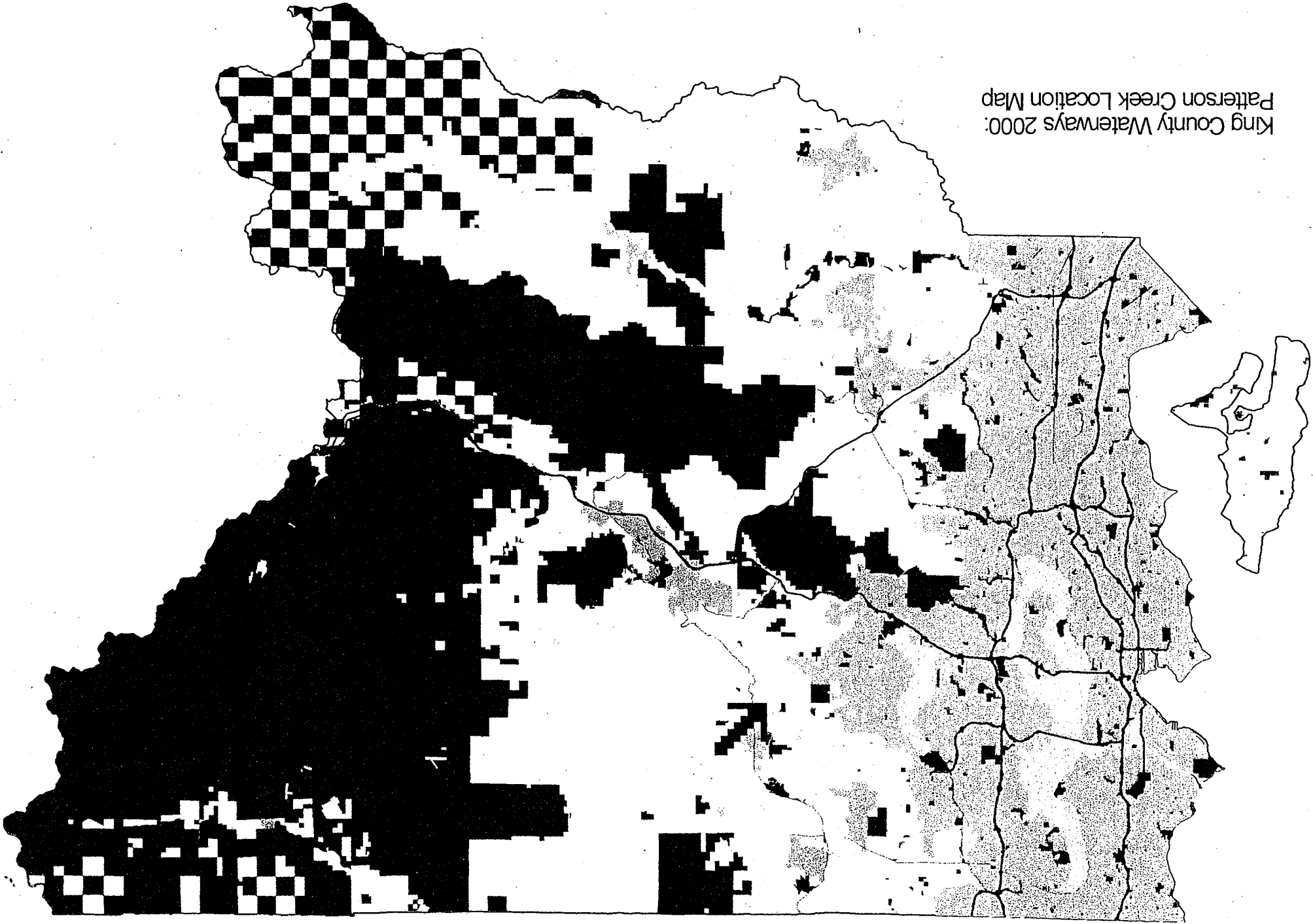
15
16
17 *Zimmerman*

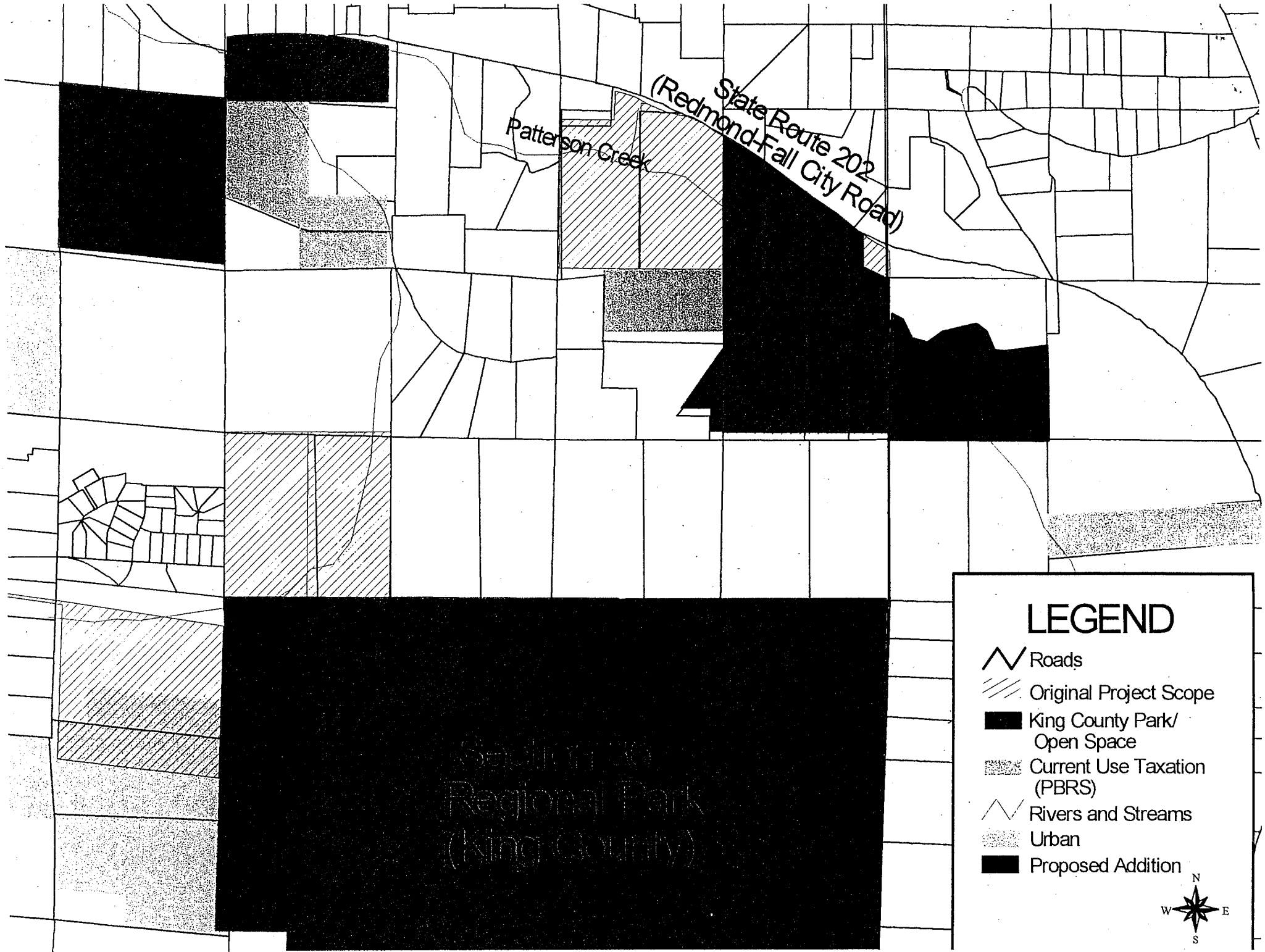
18 Clerk of the Council

19
20
21 APPROVED this 26 day of September 1997.

22
23
24
25
26
27 *Dodd Amis*
King County Executive

King County Waterways 2000:
Patterson Creek Location Map




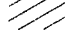

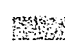






Section 30
Regional Park
(King County)

Patterson Creek

State Route 202
(Redmond-Fall City Road)

LEGEND

-  Roads
-  Original Project Scope
-  King County Park/
Open Space
-  Current Use Taxation
(PBRs)
-  Rivers and Streams
-  Urban
-  Proposed Addition


 N
E
S
W

King County Waterways 2000:
Patterson Creek Area Location

Highland State Forest

Regional Wildlife Park

ISSAQUAH

STATE ROUTE 200

CARNATION

REDMOND

